

15 Crawford St., STE 100
Needham, MA 02494
(p) 626-350-0537
(f) 626-454-1667
Lab Director: Arash Radfar M.D.
CLIA: 22D0957540



Patient Information:
20042, Donor
DOB: [REDACTED]
Sex: M
MR#:
Patient#: FT-PT8924625

Partner Information:
Not Tested

Physician:
Kuan, JAMES
ATTN: Kuan, JAMES
Las Vegas Sperm Bank
2870 S Maryland Parkway
Ste 250
Lad Vegas, NV 89109
Phone: 2064664696

Laboratory:
Fulgent Therapeutics LLC
CAP#: 8042697
CLIA#: 05D2043189
Laboratory Director:
Dr. Amar Jariwala
Report Date: **Dec 23,2024**

Accession:
FT-7431741
Test#: FT-TS15032900
Specimen Type: Blood (EDTA)
Collected: Dec 05,2024

Accession:
N/A

FINAL RESULTS



No carrier mutations identified

TEST PERFORMED

Beacon Preconception Carrier Screening - 515 Genes (without X-linked Disorders)
(515 Gene Panel; gene sequencing with deletion and duplication analysis)

INTERPRETATION:

Notes and Recommendations:

- No carrier mutations were identified in the submitted specimen. A negative result does not rule out the possibility of a genetic predisposition nor does it rule out any pathogenic mutations in areas not assessed by this test or in regions that were covered at a level too low to reliably assess. Also, it does not rule out mutations that are of the sort not queried by this test; see Methods and Limitations for more information. A negative result reduces, but does not eliminate, the chance to be a carrier for any condition included in this screen. Please see the supplemental table for details.
- Testing for copy number changes in the SMN1 gene was performed to screen for the carrier status of Spinal Muscular Atrophy. The results for this individual are within the normal range for non-carriers. See Limitations section for more information.
- This carrier screening test does not screen for all possible genetic conditions, nor for all possible mutations in every gene tested. This report does not include variants of uncertain significance; only variants classified as pathogenic or likely pathogenic at the time of testing, and considered relevant for reproductive carrier screening, are reported. Please see the gene specific notes for details. Please note that the classification of variants can change over time.
- Patients may wish to discuss any carrier results with blood relatives, as there is an increased chance that they are also carriers. These results should be interpreted in the context of this individual's clinical findings, biochemical profile, and family history.
- X-linked genes are not routinely analyzed for male carrier screening tests. Gene specific notes and limitations may be present. See below.
- Genetic counseling is recommended. Available genetic counselors and additional resources can be found at the National Society of Genetic Counselors (NSGC; <https://www.nsgc.org>)

Patient: 20042, Donor; Sex: M;
DOB: [REDACTED] MR#:

Accession#: FT-7431741; FD Patient#: FT-PT8924625;
DocID: FT-TS15032900AA; PAGE 1 of 4



GENES TESTED:

Beacon Preconception Carrier Screening - 515 Genes (without X-linked Disorders) - 515 Genes

This analysis was run using the Beacon Preconception Carrier Screening - 515 Genes (without X-linked Disorders) gene list. 515 genes were tested with 99.5% of targets sequenced at >20x coverage. For more gene-specific information and assistance with residual risk calculation, see the SUPPLEMENTAL TABLE.

AAAS, ABCA12, ABCA3, ABCA4, ABCB11, ABCB4, ABCC2, ABCC8, ACAD9, ACADM, ACADVL, ACAT1, ACOX1, ACSF3, ADA, ADAMTS2, ADAMTSL4, ADGRG1, ADGRV1, AGA, AGL, AGPS, AGXT, AHI1, AIPL1, AIRE, ALDH3A2, ALDH7A1, ALDOB, ALG1, ALG6, ALMS1, ALPL, AMN, AMT, ANO10, AP1S1, AQP2, ARG1, ARL6, ARSA, ARSB, ASL, ASNS, ASPA, ASS1, ATM, ATP6V1B1, ATP7B, ATP8B1, BBS1, BBS10, BBS12, BBS2, BBS4, BBS5, BBS7, BBS9, BCKDHA, BCKDHB, BCS1L, BLM, BLOC1S3, BLOC1S6, BMP1, BRIP1, BSND, CAD, CANT1, CAPN3, CASQ2, CBS, CC2D1A, CC2D2A, CCDC103, CCDC39, CCDC88C, CD3D, CD3E, CD40, CD59, CDH23, CEP152, CEP290, CERKL, CFTR, CHAT, CHRNE, CHRNG, CIITA, CLCN1, CLN3, CLN5, CLN6, CLN8, CLRN1, CNGB3, COL11A2, COL17A1, COL27A1, COL4A3, COL4A4, COL7A1, COX15, CPS1, CPT1A, CPT2, CRB1, CRTAP, CRYL1, CTNS, CTSA, CTSC, CTSD, CTSK, CYBA, CYP11A1, CYP11B1, CYP11B2, CYP17A1, CYP19A1, CYP1B1, CYP21A2, CYP27A1, CYP27B1, CYP7B1, DBT, DCAF17, DCLRE1C, DDX11, DGAT1, DGUOK, DHCR7, DHDDS, DLD, DLL3, DNAH11, DNAH5, DNAI1, DNAI2, DNMT3B, DOK7, DUOX2, DYNCH2H1, DYSF, EIF2AK3, EIF2B1, EIF2B2, EIF2B3, EIF2B4, EIF2B5, ELP1, EPG5, ERCC2, ERCC6, ERCC8, ESCO2, ETFA, ETFB, ETFDH, ETHE1, EVC, EVC2, EXOSC3, EYS, FAH, FAM161A, FANCA, FANCC, FANCD2, FANCE, FANCG, FANCI, FANCL, FBP1, FBXO7, FH, FKBP10, FKRP, FKTN, FMO3, FOXN1, FOXRED1, FRAS1, FREM2, FUCA1, G6PC, G6PC3, GAA, GALC, GALE, GALK1, GALNS, GALNT3, GALT, GAMT, GATM, GBA, GBE1, GCDH, GCH1, GDF5, GFM1, GHR, GJB2, GJB6, GLB1, GLDC, GLE1, GNE, GNPAT, GNPTAB, GNPTG, GNS, GORAB, GRHRP, GRIP1, GSS, GUCY2D, GUSB, HADH, HADHA, HADHB, HAMP, HAX1, HBA1, HBA2, HBB, HEXA, HEXB, HGSNAT, HJV, HLCS, HMGCL, HMOX1, HOGA1, HPD, HPS1, HPS3, HPS4, HPS5, HPS6, HSD17B3, HSD17B4, HSD3B2, HYAL1, HYLS1, IDUA, IGHMBP2, IKBKB, IL7R, INVS, ITGA6, ITGB3, ITGB4, IVD, JAK3, KCNJ1, KCNJ11, LAMA2, LAMA3, LAMB3, LAMC2, LARGE1, LCA5, LDLR, LDLRAP1, LHX3, LIFR, LIG4, LIPA, LMBRD1, LOXHD1, LPL, LRAT, LRP2, LRP3, LRP4, LRP5, LRP6, LRP7, LRP8, LRP9, LRP10, LRP11, LRP12, LRP13, LRP14, LRP15, LRP16, LRP17, LRP18, LRP19, LRP20, LRP21, LRP22, LRP23, LRP24, LRP25, LRP26, LRP27, LRP28, LRP29, LRP30, LRP31, LRP32, LRP33, LRP34, LRP35, LRP36, LRP37, LRP38, LRP39, LRP40, LRP41, LRP42, LRP43, LRP44, LRP45, LRP46, LRP47, LRP48, LRP49, LRP50, LRP51, LRP52, LRP53, LRP54, LRP55, LRP56, LRP57, LRP58, LRP59, LRP60, LRP61, LRP62, LRP63, LRP64, LRP65, LRP66, LRP67, LRP68, LRP69, LRP70, LRP71, LRP72, LRP73, LRP74, LRP75, LRP76, LRP77, LRP78, LRP79, LRP80, LRP81, LRP82, LRP83, LRP84, LRP85, LRP86, LRP87, LRP88, LRP89, LRP90, LRP91, LRP92, LRP93, LRP94, LRP95, LRP96, LRP97, LRP98, LRP99, LRP100, LRP101, LRP102, LRP103, LRP104, LRP105, LRP106, LRP107, LRP108, LRP109, LRP110, LRP111, LRP112, LRP113, LRP114, LRP115, LRP116, LRP117, LRP118, LRP119, LRP120, LRP121, LRP122, LRP123, LRP124, LRP125, LRP126, LRP127, LRP128, LRP129, LRP130, LRP131, LRP132, LRP133, LRP134, LRP135, LRP136, LRP137, LRP138, LRP139, LRP140, LRP141, LRP142, LRP143, LRP144, LRP145, LRP146, LRP147, LRP148, LRP149, LRP150, LRP151, LRP152, LRP153, LRP154, LRP155, LRP156, LRP157, LRP158, LRP159, LRP160, LRP161, LRP162, LRP163, LRP164, LRP165, LRP166, LRP167, LRP168, LRP169, LRP170, LRP171, LRP172, LRP173, LRP174, LRP175, LRP176, LRP177, LRP178, LRP179, LRP180, LRP181, LRP182, LRP183, LRP184, LRP185, LRP186, LRP187, LRP188, LRP189, LRP190, LRP191, LRP192, LRP193, LRP194, LRP195, LRP196, LRP197, LRP198, LRP199, LRP200, LRP201, LRP202, LRP203, LRP204, LRP205, LRP206, LRP207, LRP208, LRP209, LRP210, LRP211, LRP212, LRP213, LRP214, LRP215, LRP216, LRP217, LRP218, LRP219, LRP220, LRP221, LRP222, LRP223, LRP224, LRP225, LRP226, LRP227, LRP228, LRP229, LRP230, LRP231, LRP232, LRP233, LRP234, LRP235, LRP236, LRP237, LRP238, LRP239, LRP240, LRP241, LRP242, LRP243, LRP244, LRP245, LRP246, LRP247, LRP248, LRP249, LRP250, LRP251, LRP252, LRP253, LRP254, LRP255, LRP256, LRP257, LRP258, LRP259, LRP260, LRP261, LRP262, LRP263, LRP264, LRP265, LRP266, LRP267, LRP268, LRP269, LRP270, LRP271, LRP272, LRP273, LRP274, LRP275, LRP276, LRP277, LRP278, LRP279, LRP280, LRP281, LRP282, LRP283, LRP284, LRP285, LRP286, LRP287, LRP288, LRP289, LRP290, LRP291, LRP292, LRP293, LRP294, LRP295, LRP296, LRP297, LRP298, LRP299, LRP300, LRP301, LRP302, LRP303, LRP304, LRP305, LRP306, LRP307, LRP308, LRP309, LRP310, LRP311, LRP312, LRP313, LRP314, LRP315, LRP316, LRP317, LRP318, LRP319, LRP320, LRP321, LRP322, LRP323, LRP324, LRP325, LRP326, LRP327, LRP328, LRP329, LRP330, LRP331, LRP332, LRP333, LRP334, LRP335, LRP336, LRP337, LRP338, LRP339, LRP340, LRP341, LRP342, LRP343, LRP344, LRP345, LRP346, LRP347, LRP348, LRP349, LRP350, LRP351, LRP352, LRP353, LRP354, LRP355, LRP356, LRP357, LRP358, LRP359, LRP360, LRP361, LRP362, LRP363, LRP364, LRP365, LRP366, LRP367, LRP368, LRP369, LRP370, LRP371, LRP372, LRP373, LRP374, LRP375, LRP376, LRP377, LRP378, LRP379, LRP380, LRP381, LRP382, LRP383, LRP384, LRP385, LRP386, LRP387, LRP388, LRP389, LRP390, LRP391, LRP392, LRP393, LRP394, LRP395, LRP396, LRP397, LRP398, LRP399, LRP400, LRP401, LRP402, LRP403, LRP404, LRP405, LRP406, LRP407, LRP408, LRP409, LRP410, LRP411, LRP412, LRP413, LRP414, LRP415, LRP416, LRP417, LRP418, LRP419, LRP420, LRP421, LRP422, LRP423, LRP424, LRP425, LRP426, LRP427, LRP428, LRP429, LRP430, LRP431, LRP432, LRP433, LRP434, LRP435, LRP436, LRP437, LRP438, LRP439, LRP440, LRP441, LRP442, LRP443, LRP444, LRP445, LRP446, LRP447, LRP448, LRP449, LRP450, LRP451, LRP452, LRP453, LRP454, LRP455, LRP456, LRP457, LRP458, LRP459, LRP460, LRP461, LRP462, LRP463, LRP464, LRP465, LRP466, LRP467, LRP468, LRP469, LRP470, LRP471, LRP472, LRP473, LRP474, LRP475, LRP476, LRP477, LRP478, LRP479, LRP480, LRP481, LRP482, LRP483, LRP484, LRP485, LRP486, LRP487, LRP488, LRP489, LRP490, LRP491, LRP492, LRP493, LRP494, LRP495, LRP496, LRP497, LRP498, LRP499, LRP500, LRP501, LRP502, LRP503, LRP504, LRP505, LRP506, LRP507, LRP508, LRP509, LRP510, LRP511, LRP512, LRP513, LRP514, LRP515, LRP516, LRP517, LRP518, LRP519, LRP520, LRP521, LRP522, LRP523, LRP524, LRP525, LRP526, LRP527, LRP528, LRP529, LRP530, LRP531, LRP532, LRP533, LRP534, LRP535, LRP536, LRP537, LRP538, LRP539, LRP540, LRP541, LRP542, LRP543, LRP544, LRP545, LRP546, LRP547, LRP548, LRP549, LRP550, LRP551, LRP552, LRP553, LRP554, LRP555, LRP556, LRP557, LRP558, LRP559, LRP560, LRP561, LRP562, LRP563, LRP564, LRP565, LRP566, LRP567, LRP568, LRP569, LRP570, LRP571, LRP572, LRP573, LRP574, LRP575, LRP576, LRP577, LRP578, LRP579, LRP580, LRP581, LRP582, LRP583, LRP584, LRP585, LRP586, LRP587, LRP588, LRP589, LRP590, LRP591, LRP592, LRP593, LRP594, LRP595, LRP596, LRP597, LRP598, LRP599, LRP600, LRP601, LRP602, LRP603, LRP604, LRP605, LRP606, LRP607, LRP608, LRP609, LRP610, LRP611, LRP612, LRP613, LRP614, LRP615, LRP616, LRP617, LRP618, LRP619, LRP620, LRP621, LRP622, LRP623, LRP624, LRP625, LRP626, LRP627, LRP628, LRP629, LRP630, LRP631, LRP632, LRP633, LRP634, LRP635, LRP636, LRP637, LRP638, LRP639, LRP640, LRP641, LRP642, LRP643, LRP644, LRP645, LRP646, LRP647, LRP648, LRP649, LRP650, LRP651, LRP652, LRP653, LRP654, LRP655, LRP656, LRP657, LRP658, LRP659, LRP660, LRP661, LRP662, LRP663, LRP664, LRP665, LRP666, LRP667, LRP668, LRP669, LRP670, LRP671, LRP672, LRP673, LRP674, LRP675, LRP676, LRP677, LRP678, LRP679, LRP680, LRP681, LRP682, LRP683, LRP684, LRP685, LRP686, LRP687, LRP688, LRP689, LRP690, LRP691, LRP692, LRP693, LRP694, LRP695, LRP696, LRP697, LRP698, LRP699, LRP700, LRP701, LRP702, LRP703, LRP704, LRP705, LRP706, LRP707, LRP708, LRP709, LRP710, LRP711, LRP712, LRP713, LRP714, LRP715, LRP716, LRP717, LRP718, LRP719, LRP720, LRP721, LRP722, LRP723, LRP724, LRP725, LRP726, LRP727, LRP728, LRP729, LRP730, LRP731, LRP732, LRP733, LRP734, LRP735, LRP736, LRP737, LRP738, LRP739, LRP740, LRP741, LRP742, LRP743, LRP744, LRP745, LRP746, LRP747, LRP748, LRP749, LRP750, LRP751, LRP752, LRP753, LRP754, LRP755, LRP756, LRP757, LRP758, LRP759, LRP760, LRP761, LRP762, LRP763, LRP764, LRP765, LRP766, LRP767, LRP768, LRP769, LRP770, LRP771, LRP772, LRP773, LRP774, LRP775, LRP776, LRP777, LRP778, LRP779, LRP780, LRP781, LRP782, LRP783, LRP784, LRP785, LRP786, LRP787, LRP788, LRP789, LRP790, LRP791, LRP792, LRP793, LRP794, LRP795, LRP796, LRP797, LRP798, LRP799, LRP800, LRP801, LRP802, LRP803, LRP804, LRP805, LRP806, LRP807, LRP808, LRP809, LRP810, LRP811, LRP812, LRP813, LRP814, LRP815, LRP816, LRP817, LRP818, LRP819, LRP820, LRP821, LRP822, LRP823, LRP824, LRP825, LRP826, LRP827, LRP828, LRP829, LRP830, LRP831, LRP832, LRP833, LRP834, LRP835, LRP836, LRP837, LRP838, LRP839, LRP840, LRP841, LRP842, LRP843, LRP844, LRP845, LRP846, LRP847, LRP848, LRP849, LRP850, LRP851, LRP852, LRP853, LRP854, LRP855, LRP856, LRP857, LRP858, LRP859, LRP860, LRP861, LRP862, LRP863, LRP864, LRP865, LRP866, LRP867, LRP868, LRP869, LRP870, LRP871, LRP872, LRP873, LRP874, LRP875, LRP876, LRP877, LRP878, LRP879, LRP880, LRP881, LRP882, LRP883, LRP884, LRP885, LRP886, LRP887, LRP888, LRP889, LRP890, LRP891, LRP892, LRP893, LRP894, LRP895, LRP896, LRP897, LRP898, LRP899, LRP900, LRP901, LRP902, LRP903, LRP904, LRP905, LRP906, LRP907, LRP908, LRP909, LRP910, LRP911, LRP912, LRP913, LRP914, LRP915, LRP916, LRP917, LRP918, LRP919, LRP920, LRP921, LRP922, LRP923, LRP924, LRP925, LRP926, LRP927, LRP928, LRP929, LRP930, LRP931, LRP932, LRP933, LRP934, LRP935, LRP936, LRP937, LRP938, LRP939, LRP940, LRP941, LRP942, LRP943, LRP944, LRP945, LRP946, LRP947, LRP948, LRP949, LRP950, LRP951, LRP952, LRP953, LRP954, LRP955, LRP956, LRP957, LRP958, LRP959, LRP960, LRP961, LRP962, LRP963, LRP964, LRP965, LRP966, LRP967, LRP968, LRP969, LRP970, LRP971, LRP972, LRP973, LRP974, LRP975, LRP976, LRP977, LRP978, LRP979, LRP980, LRP981, LRP982, LRP983, LRP984, LRP985, LRP986, LRP987, LRP988, LRP989, LRP990, LRP991, LRP992, LRP993, LRP994, LRP995, LRP996, LRP997, LRP998, LRP999, LRP1000, LRP1001, LRP1002, LRP1003, LRP1004, LRP1005, LRP1006, LRP1007, LRP1008, LRP1009, LRP1010, LRP1011, LRP1012, LRP1013, LRP1014, LRP1015, LRP1016, LRP1017, LRP1018, LRP1019, LRP1020, LRP1021, LRP1022, LRP1023, LRP1024, LRP1025, LRP1026, LRP1027, LRP1028, LRP1029, LRP1030, LRP1031, LRP1032, LRP1033, LRP1034, LRP1035, LRP1036, LRP1037, LRP1038, LRP1039, LRP1040, LRP1041, LRP1042, LRP1043, LRP1044, LRP1045, LRP1046, LRP1047, LRP1048, LRP1049, LRP1050, LRP1051, LRP1052, LRP1053, LRP1054, LRP1055, LRP1056, LRP1057, LRP1058, LRP1059, LRP1060, LRP1061, LRP1062, LRP1063, LRP1064, LRP1065, LRP1066, LRP1067, LRP1068, LRP1069, LRP1070, LRP1071, LRP1072, LRP1073, LRP1074, LRP1075, LRP1076, LRP1077, LRP1078, LRP1079, LRP1080, LRP1081, LRP1082, LRP1083, LRP1084, LRP1085, LRP1086, LRP1087, LRP1088, LRP1089, LRP1090, LRP1091, LRP1092, LRP1093, LRP1094, LRP1095, LRP1096, LRP1097, LRP1098, LRP1099, LRP1100, LRP1101, LRP1102, LRP1103, LRP1104, LRP1105, LRP1106, LRP1107, LRP1108, LRP1109, LRP1110, LRP1111, LRP1112, LRP1113, LRP1114, LRP1115, LRP1116, LRP1117, LRP1118, LRP1119, LRP1120, LRP1121, LRP1122, LRP1123, LRP1124, LRP1125, LRP1126, LRP1127, LRP1128, LRP1129, LRP1130, LRP1131, LRP1132, LRP1133, LRP1134, LRP1135, LRP1136, LRP1137, LRP1138, LRP1139, LRP1140, LRP1141, LRP1142, LRP1143, LRP1144, LRP1145, LRP1146, LRP1147, LRP1148, LRP1149, LRP1150, LRP1151, LRP1152, LRP1153, LRP1154, LRP1155, LRP1156, LRP1157, LRP1158, LRP1159, LRP1160, LRP1161, LRP1162, LRP1163, LRP1164, LRP1165, LRP1166, LRP1167, LRP1168, LRP1169, LRP1170, LRP1171, LRP1172, LRP1173, LRP1174, LRP1175, LRP1176, LRP1177, LRP1178, LRP1179, LRP1180, LRP1181, LRP1182, LRP1183, LRP1184, LRP1185, LRP1186, LRP1187, LRP1188, LRP1189, LRP1190, LRP1191, LRP1192, LRP1193, LRP1194, LRP1195, LRP1196, LRP1197, LRP1198, LRP1199, LRP1200, LRP1201, LRP1202, LRP1203, LRP1204, LRP1205, LRP1206, LRP1207, LRP1208, LRP1209, LRP1210, LRP1211, LRP1212, LRP1213, LRP1214, LRP1215, LRP1216, LRP1217, LRP1218, LRP1219, LRP1220, LRP1221, LRP1222, LRP1223, LRP1224, LRP1225, LRP1226, LRP1227, LRP1228, LRP1229, LRP1230, LRP1231, LRP1232, LRP1233, LRP1234, LRP1235, LRP1236, LRP1237, LRP1238, LRP1239, LRP1240, LRP1241, LRP1242, LRP1243, LRP1244, LRP1245, LRP1246, LRP1247, LRP1248, LRP1249, LRP1250, LRP1251, LRP1252, LRP1253, LRP1254, LRP1255, LRP1256, LRP1257, LRP1258, LRP1259, LRP1260, LRP1261, LRP1262, LRP1263, LRP1264, LRP1265, LRP1266, LRP1267, LRP1268, LRP1269, LRP1270, LRP1271, LRP1272, LRP1273, LRP1274, LRP1275, LRP1276, LRP1277, LRP1278, LRP1279, LRP1280, LRP1281, LRP1282, LRP1283, LRP1284, LRP1285, LRP1286, LRP1287, LRP1288, LRP1289, LRP1290, LRP1291, LRP1292, LRP1293, LRP1294, LRP1295, LRP1296, LRP1297, LRP1298, LRP1299, LRP1300, LRP1301, LRP1302, LRP1303, LRP1304, LRP1305, LRP1306, LRP1307, LRP1308, LRP1309, LRP1310, LRP1311, LRP1312, LRP1313, LRP1314, LRP1315, LRP1316, LRP1317, LRP1318, LRP1319, LRP1320, LRP1321, LRP1322, LRP1323, LRP1324, LRP1325, LRP1326, LRP1327, LRP1328, LRP1329, LRP1330, LRP1331, LRP1332, LRP1333, LRP1334, LRP1335, LRP1336, LRP1337, LRP1338, LRP1339, LRP1340, LRP1341, LRP1342, LRP1343, LRP1344, LRP1345, LRP1346, LRP1347, LRP1348, LRP1349, LRP1350, LRP1351, LRP1352, LRP1353, LRP1354, LRP1355, LRP1356, LRP1357, LRP1358, LRP1359, LRP1360, LRP1361, LRP1362, LRP1363, LRP1364, LRP1365, LRP1366, LRP1367, LRP1368, LRP1369, LRP1370, LRP1371, LRP1372, LRP1373, LRP1374, LRP1375, LRP1376, LRP1377, LRP1378, LRP1379, LRP1380, LRP1381, LRP1382, LRP1383, LRP1384, LRP1385, LRP1386, LRP1387, LRP1388, LRP1389, LRP1390, LRP1391, LRP1392, LRP1393, LRP1394, LRP1395, LRP1396, LRP1397, LRP1398, LRP1399, LRP1400, LRP1401, LRP1402, LRP1403, LRP1404, LRP1405, LRP1406, LRP1407, LRP1408, LRP1409, LRP1410, LRP1411, LRP1412, LRP1413, LRP1414, LRP1415, LRP1416, LRP1417, LRP1418, LRP1419, LRP1420, LRP1421, LRP1422, LRP1423, LRP1424, LRP1425, LRP1426, LRP1427, LRP1428, LRP1429, LRP1430, LRP1431, LRP1432, LRP1433, LRP1434, LRP1435, LRP1436, LRP1437, LRP1438, LRP1439, LRP1440, LRP1441, LRP1442, LRP1443, LRP1444, LRP1445, LRP1446, LRP1447, LRP1448, LRP1449, LRP1450, LRP1451, LRP1452, LRP1453, LRP1454, LRP1455, LRP1456, LRP1457, LRP1458, LRP1459, LRP1460, LRP1461, LRP1462, LRP1463, LRP1464, LRP1465, LRP1466, LRP1467, LRP1468, LRP1469, LRP1470, LRP1471, LRP1472, LRP1473, LRP1474, LRP1475, LRP1476, LRP1477, LRP1478, LRP1479, LRP1480, LRP1481, LRP1482, LRP1483, LRP1484, LRP1485, LRP1486, LRP1487, LRP1488, LRP1489, LRP1490, LRP1491, LRP1492, LRP1493, LRP1494, LRP1495, LRP1496, LRP1497, LRP1498, LRP1499, LRP1500, LRP1501, LRP1502, LRP1503, LRP1504, LRP1505, LRP1506, LRP1507, LRP1508, LRP1509, LRP1510, LRP1511, LRP1512, LRP1513, LRP1514, LRP1515, LRP1516, LRP1517, LRP1518, LRP1519, LRP1520, LRP1521, LRP1522, LRP1523, LRP1524, LRP1525, LRP1526, LRP1527, LRP1528, LRP1529, LRP1530, LRP1531, LRP1532, LRP1533, LRP1534, LRP1535, LRP1536, LRP1537, LRP1538, LRP1539, LRP1540, LRP1541, LRP1542, LRP1543, LRP1544, LRP1545, LRP1546, LRP1547, LRP1548, LRP1549, LRP1550, LRP1551, LRP1552, LRP1553, LRP1554, LRP1555, LRP1556, LRP1557, LRP1558, LRP1559, LRP1560, LRP1561, LRP1562, LRP1563, LRP1564, LRP1565, LRP1566, LRP1567, LRP1568, LRP1569, LRP1570, LRP1571, LRP1572, LRP1573, LRP1574, LRP1575, LRP1576, LRP1577, LRP1578, LRP1579, LRP1580, LRP1581, LRP1582, LRP1583, LRP1584, LRP1585, LRP1586, LRP1587, LRP1588, LRP1589, LRP1590, LRP1591, LRP1592, LRP1593, LRP1594, LRP1595, LRP1596, LRP1597, LRP1598, LRP1599, LRP1600, LRP1601, LRP1602, LRP1603, LRP1604, LRP1605, LRP1606, LRP1607, LRP1608, LRP1609, LRP1610, LRP1611, LRP1612, LRP1613, LRP1614, LRP1615, LRP1616, LRP1617, LRP1618, LRP1619, LRP1620, LRP1621, LRP1622, LRP1623, LRP1624, LRP1625, LRP1626, LRP1627, LRP1628, LRP1629, LRP1630, LRP1631, LRP1632, LRP1633, LRP1634, LRP1635, LRP1636, LRP1637, LRP1638, LRP1639, LRP1640, LRP1641, LRP1642, LRP1643, LRP1644, LRP1645, LRP1646, LRP1647, LRP1648, LRP1649, LRP1650, LRP1651, LRP1652, LRP1653, LRP1654, LRP1655, LRP1656, LRP1657, LRP1658, LRP1659, LRP1660, LRP1661, LRP1662, LRP1663, LRP1664, LRP1665, LRP1666, LRP1667, LRP1668, LRP1669, LRP1670, LRP1671, LRP1672, LRP1673, LRP1674, LRP1675, LRP1676, LRP1677, LRP1678, LRP1679, LRP1680, LRP1681, LRP1682, LRP1683, LRP1



otherwise, to future pregnancies, and negative results do not rule out the genetic risk to a pregnancy. Official gene names change over time. Fulgent uses the most up to date gene names based on HUGO Gene Nomenclature Committee (<https://www.genenames.org>) recommendations. If the gene name on report does not match that of ordered gene, please contact the laboratory and details can be provided. Result interpretation is based on the available clinical and family history information for this individual, collected published information, and Alamut annotation available at the time of reporting. This assay is not designed or validated for the detection of low-level mosaicism or somatic mutations. This assay will not detect certain types of genomic aberrations such as translocations, inversions, or repeat expansions other than specified genes. DNA alterations in regulatory regions or deep intronic regions (greater than 20bp from an exon) may not be detected by this test. Unless otherwise indicated, no additional assays have been performed to evaluate genetic changes in this specimen. There are technical limitations on the ability of DNA sequencing to detect small insertions and deletions. Our laboratory uses a sensitive detection algorithm, however these types of alterations are not detected as reliably as single nucleotide variants. Rarely, due to systematic chemical, computational, or human error, DNA variants may be missed. Although next generation sequencing technologies and our bioinformatics analysis significantly reduce the confounding contribution of pseudogene sequences or other highly-homologous sequences, sometimes these may still interfere with the technical ability of the assay to identify pathogenic alterations in both sequencing and deletion/duplication analyses. Deletion/duplication analysis can identify alterations of genomic regions which include one whole gene (buccal swab specimens and whole blood specimens) and are two or more contiguous exons in size (whole blood specimens only); single exon deletions or duplications may occasionally be identified, but are not routinely detected by this test. When novel DNA duplications are identified, it is not possible to discern the genomic location or orientation of the duplicated segment, hence the effect of the duplication cannot be predicted. Where deletions are detected, it is not always possible to determine whether the predicted product will remain in-frame or not. Unless otherwise indicated, deletion/duplication analysis has not been performed in regions that have been sequenced by Sanger.


Gene Specific Notes and Limitations

ALG1: Due to the interference by highly homologous regions, our current testing method has less sensitivity to detect variants in exons 6-13 of the ALG1 gene (NM_019109.4). CEP290: Copy number analysis for exons 8-13 and exons 39-42 may have reduced sensitivity in the CEP290 gene. Confirmation of these exons are limited to individuals with a positive personal history of CEP290-related conditions and/or individuals carrying a pathogenic/likely pathogenic sequence variant. CFTR: Analysis of the intron 8 polymorphic region (e.g. IVS8-5T allele) is only performed if the p.Arg117His (R117H) mutation is detected. Single exon deletion/duplication analysis is limited to deletions of previously reported exons: 1, 2, 3, 11, 19, 20, 21. Analysis of the intron 8 polymorphic region (e.g. IVS8-5T allele) is only performed if the p.Arg117His (R117H) mutation is detected. Single exon deletion/duplication analysis is limited to deletions of previously reported exons: 1, 2, 3, 11, 19, 20, 21. CFTR variants primarily associated with CFTR-related isolated congenital bilateral absence of the vas deferens and CFTR-related pancreatitis are not included in this analysis. CFTR variants with insufficient evidence of being cystic fibrosis mutations will not be reported either. CRYL1: As mutations in the CRYL1 gene are not known to be associated with any clinical condition, sequence variants in this gene are not analyzed. However, to increase copy number detection sensitivity for large deletions including this gene and a neighboring gene on the panel (GJB6, also known as connexin 30), this gene was evaluated for copy number variation. CYP11B1: The current testing method is not able to reliably detect certain pathogenic variants in this gene due to the interference by highly homologous regions. This analysis is not designed to detect or rule-out copy-neutral chimeric CYP11B1/CYP11B2 gene. CYP11B2: The current testing method is not able to reliably detect certain pathogenic variants in this gene due to the interference by highly homologous regions. This analysis is not designed to detect or rule-out copy-neutral chimeric CYP11B1/CYP11B2 gene. CYP21A2: Significant pseudogene interference and/or reciprocal exchanges between the CYP21A2 gene and its pseudogene, CYP21A1P, have been known to occur and may impact results. As such, the relevance of variants reported in this gene must be interpreted clinically in the context of the clinical findings, biochemical profile, and family history of each patient. LR-PCR is not routinely ordered for NM_000500.9:c.955C>T (p.Gln319Ter). Individuals with c.955C>T (p.Gln319Ter) will be reported as a Possible Carrier indicating that the precise nature of the variant has not been determined by LR-PCR and that the variant may occur in the CYP21A2 wild-type gene or in the CYP21A1P pseudogene. The confirmation test is recommended if the second reproductive partner is tested positive for variants associated with classic CAH. DDX11: Due to the interference by highly homologous regions, our current testing method has less sensitivity to detect variants in the DDX11 gene. DUOX2: The current testing method is not able to reliably detect variants in exons 6-8 of the DUOX2 gene (NM_014080.5) due to significant interference by the highly homologous gene, DUOX1. FANCD2: Due to pseudogene interference, copy-number-variants within exon 14-17 of the FANCD2 gene (NM_033084.4) are not evaluated and detection of single-nucleotide variants and small insertions/deletions in this region is not guaranteed. GALT: In general, the D2 "Duarte" allele is not reported if detected, but can be reported upon request. While this allele can cause positive newborn screening results, it is not known to cause clinical symptoms in any state. See GeneReviews for more information: <https://www.ncbi.nlm.nih.gov/books/NBK1518/> GBA: Significant pseudogene interference and/or reciprocal exchanges between the GBA gene and its pseudogene, GBAP1, have been known to occur and may impact results. As such, the relevance of variants reported in this gene must be interpreted clinically in the context of this individual's clinical findings, biochemical profile, and family history. The current testing method cannot detect copy-neutral rearrangements between the pseudogene and the functional gene, which have been reported in very rare cases of Gaucher disease (PubMed: 21704274). HBA1: Significant interference



from highly homologous regions in exons 1-2 of the HBA1 gene has been recognized to occur, potentially impeding the assay's technical capability to detect pathogenic alterations during sequencing analyses. HBA2: Significant interference from highly homologous regions in exons 1-2 of the HBA2 gene has been recognized to occur, potentially impeding the assay's technical capability to detect pathogenic alterations during sequencing analyses. HSD17B4: Copy number analysis for exons 4-6 may have reduced sensitivity in the HSD17B4 gene. Confirmation of these exons are limited to individuals with a positive personal history of D-bifunctional protein deficiency and Perrault syndrome and/or individuals carrying a pathogenic/likely pathogenic sequence variant. LMBRD1: Copy number analysis for exons 9-12 may have reduced sensitivity in the LMBRD1 gene. Confirmation of these exons are limited to individuals with a positive personal history of combined methylmalonic aciduria and homocystinuria and/or individuals carrying a pathogenic/likely pathogenic sequence variant. MTHFR: As recommended by ACMG, the two common polymorphisms in the MTHFR gene - c.1286A>C (p.Glu429Ala, also known as c.1298A>C) and c.665C>T (p.Ala222Val, also known as c.677C>T) - are not reported in this test due to lack of sufficient clinical utility to merit testing (PubMed: [23288205](#)). NEB: This gene contains a 32-kb triplicate region (exons 82-105) which is not amenable to sequencing and deletion/duplication analysis. NPHS2: If detected, the variant NM_014625.3:c.686G>A (p.Arg229Gln) will not be reported as this variant is not significantly associated with disease when homozygous or in the compound heterozygous state with variants in exons 1-6 of NPHS2. OTOA: Due to pseudogene interference, our current testing method is not able to reliably detect variants in exons 20-28 (NM_144672.3) in the OTOA gene. SMN1: The current testing method detects sequencing variants in exon 7 and copy number variations in exons 7-8 of the SMN1 gene (NM_022874.2). Sequencing and deletion/duplication analysis are not performed on any other region in this gene. About 5%-8% of the population have two copies of SMN1 on a single chromosome and a deletion on the other chromosome, known as a [2+0] configuration (PubMed: [20301526](#)). The current testing method cannot directly detect carriers with a [2+0] SMN1 configuration but can detect linkage between the silent carrier allele and certain population-specific single nucleotide changes. As a result, a negative result for carrier testing greatly reduces but does not eliminate the chance that a person is a carrier. Only abnormal results will be reported. TERT: The TERT promoter region is analyzed for both sequencing and copy number variants. TYR: Due to the interference by highly homologous regions, our current testing method has less sensitivity to detect variants in exons 4-5 of the TYR gene (NM_000372.5). VPS45: LoF is not a known disease mechanism. WRN: Due to the interference by highly homologous regions within the WRN gene, our current testing method has less sensitivity to detect variants in exons 10-11 of WRN (NM_000553.6).

SIGNATURE:



Dr. Harry Gao, DABMG, FACMG on 12/23/2024
Laboratory Director, Fulgent

DISCLAIMER:

This test was developed and its performance characteristics determined by Fulgent Therapeutics LLC CAP #8042697 CLIA #05D2043189; 4399 Santa Anita Ave., El Monte, CA, 91731. It has not been cleared or approved by the FDA. The laboratory is regulated under CLIA as qualified to perform high-complexity testing. This test is used for clinical purposes. It should not be regarded as investigational or for research. Since genetic variation, as well as systematic and technical factors, can affect the accuracy of testing, the results of testing should always be interpreted in the context of clinical and familial data. For assistance with interpretation of these results, healthcare professionals may contact us directly at [626-350-0537](tel:626-350-0537) or by email at info@fulgentgenetics.com. It is recommended that patients receive appropriate genetic counseling to explain the implications of the test result, including its residual risks, uncertainties and reproductive or medical options.

To view the supplemental table describing the carrier frequencies, detection rates, and residual risks associated with the genes tested on any Beacon panel, please visit the following link:

[Beacon Expanded Carrier Screening Supplemental Table](#)





Patient Information	Specimen Information	Client Information
20042, DONOR DOB: ██████ AGE: ██████ Gender: M Fasting: U Phone: 725.257.0900 Patient ID: 20042	Specimen: LV077551Y Requisition: 0000036 Collected: 12/05/2024 / 10:20 PST Received: 12/05/2024 / 23:42 PST Reported: 12/15/2024 / 21:06 PST	Client #: 88807473 MAIL500 FOORD, DYLAN R LAS VEGAS SPERM BANK 2870 S MARYLAND PKWY STE 250 LAS VEGAS, NV 89109-1548

COMMENTS: FASTING:UNKNOWN

Cytogenetic Report

CHROMOSOME ANALYSIS, BLOOD - 14596 **Lab: EZ**

CHROMOSOME ANALYSIS, BLOOD

Order ID: 24-586286
 Specimen Type: Blood
 Clinical Indication: GAMETE DONOR

RESULT:
 NORMAL MALE KARYOTYPE

INTERPRETATION:
 Chromosome analysis revealed normal G-band patterns within the limits of standard cytogenetic analysis.

Please expect the results of any other concurrent study in a separate report.

NOMENCLATURE:
 46,XY

ASSAY INFORMATION:

Method: G-Band (Digital Analysis: MetaSyst)
 Cells Counted: 20
 Band Level: 450
 Cells Analyzed: 5
 Cells Karyotyped: 5

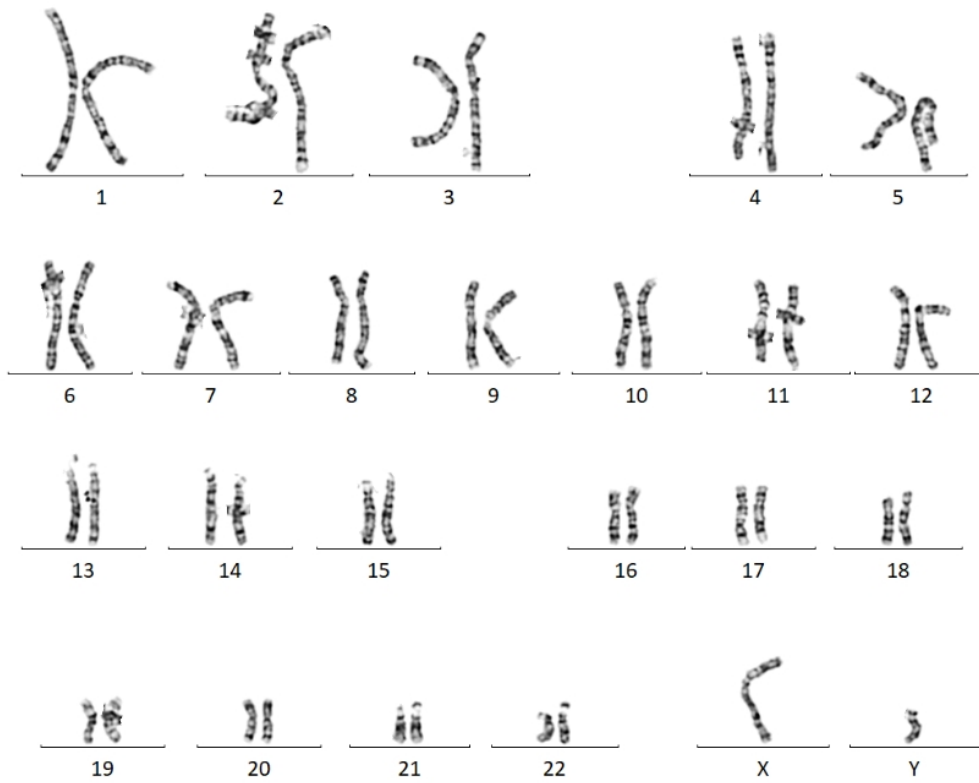
This test does not address genetic disorders that cannot be detected by standard cytogenetic methods or rare events such as low level mosaicism or subtle rearrangements.

Reha M. Toydemir, MD, PhD, FACMG, [site SJC5]

Electronic Signature: 12/15/2024 11:20 PM



Patient Information	Specimen Information	Client Information
<p>20042, DONOR</p> <p>DOB: ██████ AGE: █</p> <p>Gender: M Fasting: U</p> <p>Patient ID: 20042</p>	<p>Specimen: LV077551Y</p> <p>Collected: 12/05/2024 / 10:20 PST</p> <p>Received: 12/05/2024 / 23:42 PST</p> <p>Reported: 12/15/2024 / 21:06 PST</p>	<p>Client #: 88807473</p> <p>FOORD, DYLAN R</p>



PERFORMING SITE:

EZ QUEST DIAGNOSTICS/NICHOLS SJ, 33608 ORTEGA HWY, SAN JUAN CAPISTRANO, CA 92675-2042 Laboratory Director: IRINA MARAMICA, MD, PHD, MBA, CLIA: 05D0643352